



AN ELECTRONIC NEWS PUBLICATION OF DAF

NEWS

A RESIDENTIAL TREATMENT MAGAZINE

JULY ISSUE 2025



Residential Recovery at DAF

YOUR
SUPPORT
FUELS
SECOND
CHANCES!

PROGRAM OVERVIEW

MORE INFORMATION VISIT: www.dafpbci.org

SIEMENS-EVERT COMPREHENSIVE SERVICE CAMPUS



DRUG ABUSE FOUNDATION

400 SOUTH SWINTON AVE
DELRAY BEACH, FL 33444 (561)278-0000



NEWS

A RESIDENTIAL TREATMENT MAGAZINE

ABOUT

- 02 *WHO WE ARE: ABOUT THE DRUG ABUSE FOUNDATION.*
- 03 *WHOLE HEALING WORKS: OUR HOLISTIC APPROACH*
- 04 *CLIENT TESTIMONY: JOHN'S SUCCESS STORY*

PROGRAMS

- 05 *STABILIZATION BEGINS HERE: CLINICAL STABILIZATION - LEVEL 2 SERVICES*
- 06 *STAYING STRONG: RELAPSE PREVENTION - LEVEL 4 SERVICES*
- 07 *PATHWAY TO RECOVERY: MEDICATION-ASSISTED TREATMENT (MAT)*

SERVICES

- 08 *HOPE & HOLDING: PREGNANT & POSTPARTUM WOMEN'S PROGRAM*
- 09 *BROTHERHOOD: MEN'S RESIDENTIAL PROGRAM*
- 10 *WOMEN RISING: WOMEN'S PROGRAM*

CONTENT

JULY ISSUE 2025



WHOLE HEALING WORKS

HOW DAF IS WEAVING
HOLISTIC CARE INTO
RECOVERY.



PATHWAY TO RECOVERY

MEDICATION-ASSISTED
TREATMENT (MAT)



STABILIZATION BEGINS HERE

CLINICAL STABILIZATION
- LEVEL 2 SERVICES

STAYING STRONG

RELAPSE PREVENTION -
LEVEL 4 SERVICES

WHO WE ARE

FAQs about
residential services

1

WHO IS ELIGIBLE FOR DAF'S RESIDENTIAL TREATMENT SERVICES?

DAF serves adults 18
and older with a
substance use
disorder diagnosis.

www.dafpbci.org

DELRAY BEACH, FL
33444
(561)278-0000

THE DRUG ABUSE FOUNDATION OF PALM BEACH COUNTY, INC. (DAF)

ABOUT

JULY 2025

MISSION

To encourage and support the process of recovery from chemical addiction, promote drug free living and mental wellbeing.

HISTORY

Founded in 1967, DAF has been a lifeline for individuals and families impacted by addiction across South Florida. With more than 50 years of service, DAF continues to innovate care while staying grounded in compassion and community commitment.

ACCESS

DAF accepts self-referrals, provider referrals and walk-ins 24/7. Medicaid and private insurance accepted but not required. Priority admission is given to pregnant and post partum women, individual using opioids and parents. All services begin with a comprehensive assessment to ensure the proper and least restrictive level of care. If you or someone you know needs assistance please call or stop in for an assessment.



WHOLE HEALING
WORKS

FAQs about
residential services

2

HOW DO I OR A LOVED ONE ACCESS TREATMENT?

You can walk in, call our admissions line, or be referred by a medical provider, case manager, or legal agency. We provide a full clinical assessment to determine the appropriate level of care.

WEAVING HOLISTIC CARE INTO RECOVERY

Fitness Park

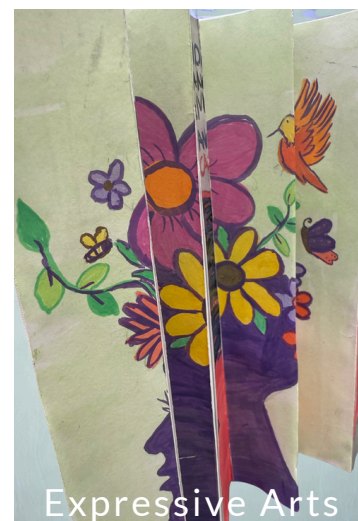
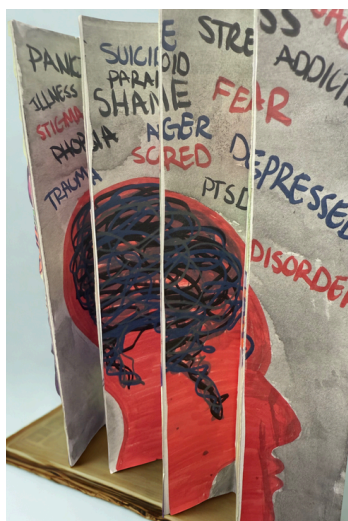
At DAF, recovery means more than sobriety—it means restoring the whole self.

Through a holistic approach, clients engage in expressive arts, physical fitness in our on-site fitness park, and other therapeutic activities that strengthen mind, body, and spirit.

In our expressive arts sessions, clients create paintings and visual reflections that often line the facility walls—reminders that transformation is possible.

Your support creates
powerful spaces for
expression and healing.

This client artwork for Mental Health Awareness contrasts good days and bad, vividly capturing emotional highs and lows.



Expressive Arts

www.dafpbci.org

DELRAY BEACH, FL
33444
(561)278-0000

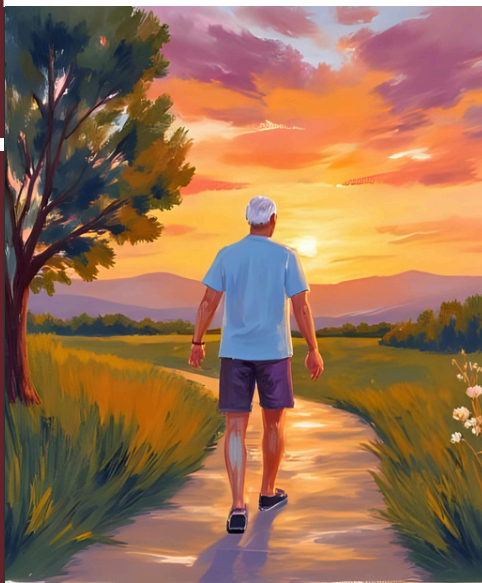
CLIENT TESTIMONY

FAQs about
residential services

4

IS TREATMENT CONFIDENTIAL?

Yes. All services are provided in accordance with HIPAA privacy laws and 42 CFR Part 2 confidentiality regulations.



ABOUT

JULY 2025

From Rock Bottom to Renewal: John's Journey

Client Testimony – John's Story*

*(Name changed to protect identity)

At DAF, recovery is about more than sobriety—it's about rebuilding lives. Our treatment programs provides compassionate, structured care that supports each client through stabilization, relapse prevention, and long-term recovery. We meet people where they are and guide them on a healing journey physically, emotionally, and mentally.

Here's what one of our clients has to say about their experience...

When I arrived at DAF, I was angry, overwhelmed by legal problems, and completely disconnected from my family. I'd been in and out of detox, never truly committing to recovery. I blamed everyone else for my situation and didn't believe treatment could help me. But something told me to stay—and try.

Physically, I was struggling with serious health issues and convinced I couldn't function without drugs. I was resistant, dishonest, and manipulative. But the staff never gave up on me. My therapist and peers challenged me, held me accountable, and slowly, I began to trust the process.

After two months, I was shocked to realize I no longer needed pain medication. I began helping others, welcoming new clients, and rebuilding relationships with my wife and kids. What once felt impossible—healing—started to feel real.

By my fourth month, I felt like a new man. I entered extended care, got a job, and began supporting my family again. I've taken every recommendation seriously and now understand what it takes to stay clean. DAF helped me reclaim my life—and I'm forever grateful.

**“Available, Regardless
Of Ability To Pay”**

www.dafpbci.org

DELRAY BEACH, FL
33444
(561)278-0000



**STABILIZATION BEGINS
HERE: LEVEL 2
RESIDENTIAL UNIT**

*FAQs about
residential services*

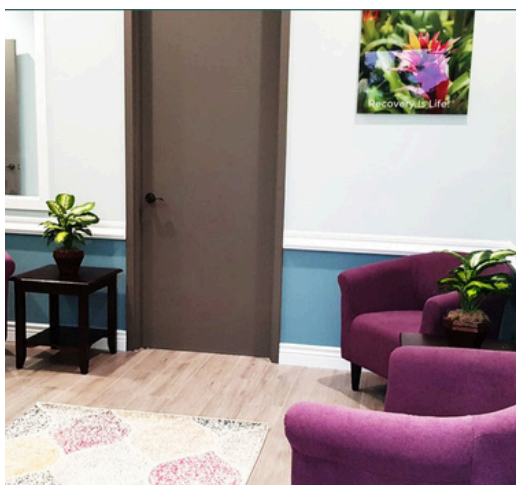
5

**DO I HAVE TO
PAY FOR
TREATMENT?**

DAF accepts Medicaid, grants, and other funding to cover treatment costs. No one is turned away due to inability to pay.

Stabilization Begins Here

LEVEL 2 RESIDENTIAL



Our Level 2 residential programs provide Clinical Stabilization to help individuals stop substance use, manage cravings, and address trauma and mental health needs. Clients build recovery skills through therapy, medication-assisted treatment, peer support.

DAF's Level 2 Residential Unit offers Structured Clinical Stabilization for individuals in the early stages of recovery. This intensive treatment addresses:

- Cravings management
- Physical and emotional stabilization
- Coping strategies for real-world challenges
- Support for trauma, mental health, and physical wellness



Clients receive peer support, participate in evidence-based treatment, and other recovery support services to start on their pathway to recovery. Your support provides the foundation that makes this first, critical phase possible.

www.dafpbci.org

DELRAY BEACH, FL
33444
(561)278-0000

Staying Strong

LEVEL 4 RESIDENTIAL:

STAYING STRONG:
LEVEL 4 RESIDENTIAL
TREATMENT

FAQs about
residential services

6

WHAT HAPPENS AFTER I COMPLETE THE PROGRAM?

We offer recovery management services, including relapse prevention planning, peer support, vocational referrals, and continued outpatient care to help sustain your recovery.



Level 4 Residential Treatment at DAF focuses on Relapse Recovery and Management. This program helps individuals:

- Identify and manage personal triggers
- Rebuild recovery capital
- Develop sustainable routines
- Strengthen decision-making and conflict resolution

Our Level 4 program offers intensive treatment for those at risk of relapse, focusing on triggers, resilience, and long-term recovery. Clients build life skills and recovery capital with peer support and integrated recovery management to sustain progress beyond treatment.



The level 4 program affords individuals the opportunity to work during the day and receive treatment and recovery support services at night. Clients can further their recovery journey in a safe and supportive environment.

Peer mentoring is central to this stage —clients encourage one another to stay the course. With your help, clients in relapse find hope and strength to return to recovery.



www.dafpbci.org

DELRAY BEACH, FL
33444
(561)278-0000

MEDICATION-ASSISTED
TREATMENT (MAT)

FAQs about
residential services

3

WHAT SHOULD
I BRING WITH
ME WHEN
ENTERING
RESIDENTIAL
CARE?

Pack clothing, hygiene items, and essential documents like ID or insurance information. A packing list is provided at intake. DAF offers basic necessities if you're unable to bring them.

PATHWAY TO RECOVERY

MEDICATION-ASSISTED
TREATMENT (MAT)

At DAF, Recovery Management is more than treatment—it’s a pathway to lifelong recovery.

WHAT IS RECOVERY
MANAGEMENT?

Recovery Management at DAF is a client-centered, strengths-based model designed to improve social functioning, enhance quality of life, and ensure sustained recovery.



MEDICATION-ASSISTED
TREATMENT (MAT)

MAT combines FDA-approved medications with behavioral therapies to treat the whole person—biologically, psychologically, and socially.

HOW MAT WORKS IN
RESIDENTIAL CARE

Medications used at DAF include:

- Buprenorphine (Suboxone)
- Methadone (in partnership with a third-party provider)
- Naltrexone (Vivitrol)

DAF offers MAT at all residential levels of care:

- Level 2 – Clinical Stabilization: Provides structured care and stabilization for those in early recovery including medically supervised detox and tailored treatment planning.
- Level 4 – Relapse Recovery: Offers intensive relapse prevention services for individuals at risk of returning to use.



www.dafpbci.org

DELRAY BEACH, FL
33444
(561)278-0000

Hope & Holding

*FAQs about
residential services*

7

**CAN I GET
HELP IF I NEED
DETOX BEFORE
TREATMENT?**

Yes. If detox is required, DAF may admit you to its detox unit or refer you to another provider before starting residential care.

SERVICES

JULY 2025



Our Pregnant & Postpartum Women's Program supports mothers in recovery through:

- Medical and prenatal care
- Trauma-informed counseling
- Parenting classes
- Nutrition and fitness services
- Expressive therapies

Moms and babies attend treatment together, in a homelike setting.

This program changes two lives at once —and your donation makes that possible.

"Recovery during pregnancy isn't just possible—it's powerful. Every step a mother takes is a step toward generational healing."

www.dafpbci.org

DELRAY BEACH, FL
33444
(561)278-0000



STRONG FOUNDATION: THE MEN'S PROGRAM



HOW CAN I APPLY TO WORK AT DAF?

DAF welcomes individuals passionate about recovery, behavioral health, and community impact. To explore open positions, visit www.dafpbci.org and click on the Careers or Employment section. You can also call our office to inquire about current job opportunities and application procedures.

The Men's Program fosters responsibility, leadership, and personal accountability. Residents build emotional awareness, strengthen communication, and support one another through a peer-led culture.

Service includes:

- group and individual therapy
- physical fitness
- life skills
- recovery support

Staff bring a grounded, community-based approach, helping men rise through treatment, mentorship and structure.

“We build each other up—every day, every step.”

www.dafpbci.org

DELRAY BEACH, FL
33444
(561)278-0000

HOW CAN I SUPPORT THE WORK DAF IS DOING?

Donations help us provide treatment, shelter, meals, and support services. Visit www.dafpbci.org to give, learn more, or become a partner in recovery.

www.dafpbci.org

DELRAY BEACH, FL
33444
(561)278-0000

WOMEN RISING: WOMANS PROGRAM

SERVICES

JULY 2025



The Women's Residential Program provides safety, sisterhood, and structure. Programming includes:

- Group therapy
- Art and journaling
- Vocational support
- Emotional resilience building
- Parenting tools and self-esteem work

Women grow from survival to strength, surrounded by peer support and compassionate care.

**“I felt seen
for the first
time in
years.”**





State of
Florida



The Ounce
of
Prevention
Fund



Palm Beach County
Sheriff's Office

Department of
Health



**WILLIAMS
BUILDING**



**EVERT
BUILDING**



**DRUG ABUSE FOUNDATION'S
COMPREHENSIVE SYSTEM OF CARE AND SERVICE GROUPS**



**PREVENTION
SERVICES GROUP**



**INTERVENTION
SERVICES GROUP**



FOR SUBSTANCE ABUSE ONLY
**CRISIS
SERVICES GROUP**



**MED/PSYCH
SERVICES GROUP**



**TREATMENT
SERVICES GROUP**

(561)278-0000
www.dafpbci.org

celebrating a half century of service

RECOVERY IS LIFE!

*And Self Honesty Is The Only True Pathway To Recovery
...to encourage and support the process of recovery from
chemical addiction, to promote drug free living and mental well being...*

400 South
Swinton Avenue
Delray Beach, FL
33444

